



- Indoor / Outdoor installations
- Side opening, easy camera servicing
- Weatherproof standard IP66/IP67 (with cable glands or with optional sealing rings)
- Built-in wiper option
- Different mounting options: standard bracket, cable management bracket or P&T

Innovative and stylish housing, designed to simplify installation and servicing, HOV ensures total protection against all environmental conditions. Due to its side opening, the accessibility to the camera, lens and all its connections is made far easier.

Its weatherproof features are ensured by neoprene-rubber gaskets and 3 M16 cable glands with their specific gaskets, or by the sealing gaskets, when installed with bracket with internal cable management.

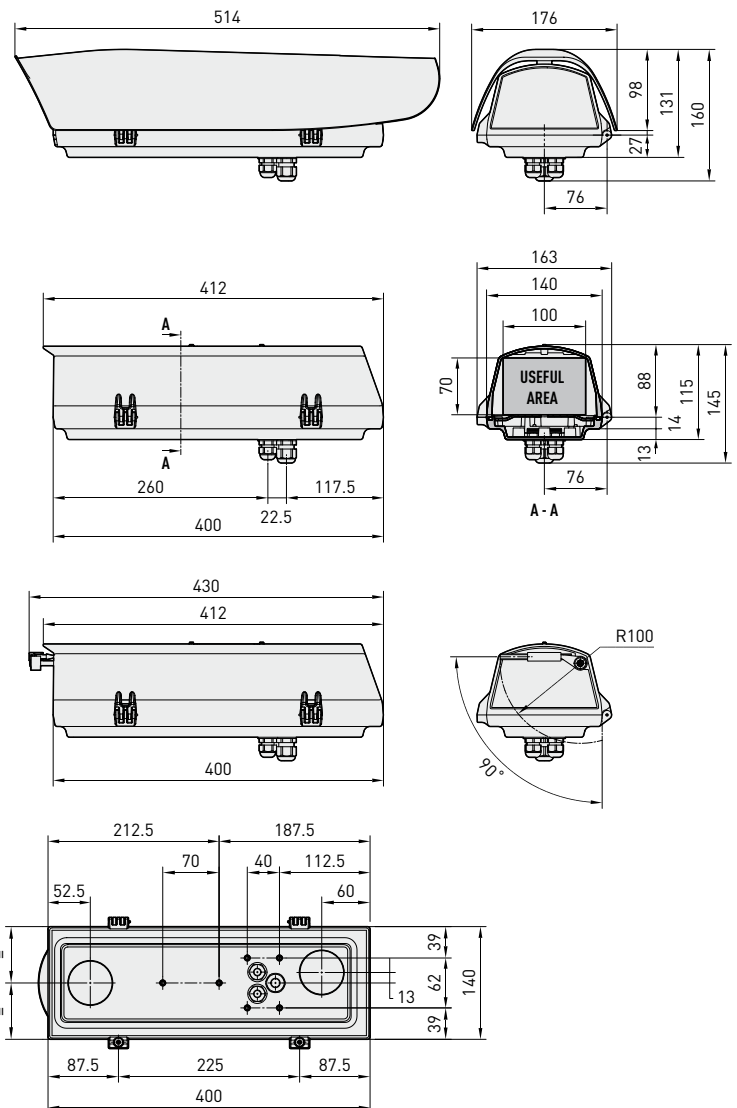
The body is made of aluminium; the sunshield of ABS material. The sunshield with its integrated edge-protector offers good thermal insulation. HOV offers the possibility of various mountings: wall or ceiling brackets, standard or full cable management brackets, or Pan & Tilt heads. HOV can also housing most combinations of cameras and lenses.

The housing can be equipped with a built-in, self-parking wiper. The wiper does not interfere with the viewing range of the installed camera.

A specific version with a very efficient cooling system is available for installation with IP cameras and for high environmental temperature.

A wide range of accessories is available, including sunshield, heater and fan-assisted heater, blower and camera power supply, wiper and alarm tamper switch.

These accessories are supplied as a simple plug-in kit for easy installation or factory-installed.



The values are in millimeters.

HOV

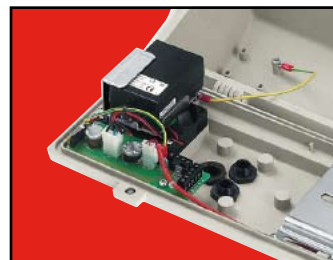
SIDE OPENING ALUMINIUM HOUSING



1
CAMERA HOUSINGS

| Model | Sunshield | Heater 115/230Vac | Heater 12Vdc/24Vac | 12Vdc blower with double air exchange filter | 24Vac blower with double air exchange filter | PS IN 100/240Vac, OUT 12Vdc, 1A for blower with double air exchange filter | Wall mount WBOVA2 | Wiper 24Vac | Wiper 230Vac | Max consumption |
|--------------|-----------|----------------------|-----------------------|---|---|--|-------------------|----------------|-----------------|-----------------|
| HOV32D0A000 | | | | | | | | | | |
| HOV32K0A000 | • | | | | | | | | | |
| HOV32K0A016 | • | | | | • | | | | | 4W |
| HOV32K0A017 | • | | | • | | | | | | 4W |
| HOV32K0A018 | • | | | | | • | | | | 15W |
| HOV32K0A100 | • | | | | | | | • | | 7W |
| HOV32K0A147 | • | | | | • | | | • | | 11W |
| HOV32K0A200 | • | | | | | | | • | | 7W |
| HOV32K1A000 | • | • | | | | | | | | 40W |
| HOV32K1A018 | • | • | | | | • | | | | 44W |
| HOV32K1A085B | • | • | | | | | • | | | 40W |
| HOV32K1A100 | • | • | | | | | | • | | 47W |
| HOV32K2A000 | • | | • | | | | | | | 20W |
| HOV32K2A016 | • | | •* | | • | | | | | 24W |
| HOV32K2A017 | • | | •* | • | | | | | | 24W |
| HOV32K2A085B | • | | • | | | | • | | | 20W |
| HOV32K2A147 | • | | •* | | • | | | • | | 31W |
| HOV32K2A200 | • | | •* | | | | | • | | 27W |

* The housing must have the same supply as the blower.



TECHNICAL DATA

GENERAL

Aluminium
 Sunshield in ABS
 Epoxypolyester powder painting, RAL9002 colour
 Stainless steel external screws
 Supplied with instruction manual, desiccant bag, accessories for camera and lens mounting

MECHANICAL

3xM16 cable glands
 Glass window (BxH): 118x75mm (4.6x2.7in)
 Internal usable area (BxH): 100x70mm (3.9x2.7in)
 Internal usable length with and without accessories: 250mm (9.8in)

ELECTRICAL

Heater Ton 15°C+/-3°C (59°F +/-5°F) Toff 22°C+/-3°C (71°F +/-5°F)

- IN 12Vdc/24Vac, consumption 20W max
- IN 115/230Vac, consumption 40W max

Heater fan assistant, continuous duty

- IN 12Vdc, consumption 4W max
- IN 24Vac, consumption 4W max
- IN 100-240Vac, consumption 4W max, with wide range power supply IN 100-240Vac/12Vdc

Blower with thermostat Ton 35°C+/-3°C (95°F+/-5°F) Toff 20°C+/-3°C (71°F+/-5°F) for version with double filter

- IN 12Vdc, consumption 4W max
- IN 24Vac, consumption 4W max

Camera power supply

- IN 100-240Vac - OUT 12Vdc, 50/60 Hz, 1A
- IN 230Vac - OUT 24Vac, 50Hz, 400mA

Integrated Wiper

- IN 230Vac, consumption 7W max
- IN 24Vac, consumption 7W max

ACCESSORIES

| | |
|-------------|--|
| OH0VS32A000 | Sunshield |
| OHEH26 | Heater 115/230Vac |
| OHEH27 | Heater 12Vdc/24Vac |
| OH0VV1 | Heater fan assistant, continuous duty, IN 12Vdc |
| OH0VV2 | Heater fan assistant, continuous duty, IN 24Vac |
| OH0VV3 | Heater fan assistant, continuous duty, IN 100/240Vac |
| OH0VPS1B | Wide range camera power supply IN 100-240Vac - OUT 12Vdc |
| OH0VPS2B | Camera power supply IN 230Vac - OUT 24Vac |
| OH0VTA1 | Tamper switch on board with tamper proof screws and key |
| OHEG6B | Weatherproof junction box IP55 |

RELATED PRODUCTS

| | |
|-------------|--|
| WBJA | Wall bracket with ball joint |
| WBOVA2 | Wall bracket with internal cable channel |
| WBOV3A2 | Wall bracket with internal cable channel, support plate and integrated junction box |
| WCM3A | Ceiling bracket with ball joint |
| WCM5A | Ceiling bracket with ball joint |
| WCM4A2 | Ceiling bracket with internal cable channel |
| WFWCA | Column mount with ball joint |
| OWBIP2 | Kit special gasket to allow protection IP66/IP67 for WBOVA2 and WCM4A2 |
| PTH300 | Pan&Tilt series |
| PTH900 | Pan&Tilt series |
| VIP5WAS01 | Tank 5l, 230Vac washer pump |
| VIP5WAS02 | Tank 5l, 24Vac washer pump |
| VIP23WAS01 | Tank 23l, 230Vac washer pump |
| VIP23WAS02 | Tank 23l, 24Vac washer pump |
| VIP23WASA01 | Tank 23l, 230Vac washer pump, high delivery up 30m (98.4ft) |
| UPTWAS01C | Tank 23l, IN 230Vac washer pump (prearranged for DTWRX board) |
| UPTWAS02C | Tank 23l, IN 24Vac washer pump (prearranged for DTWRX board) |
| UPTWASA01C | Tank 23l, IN 230Vac washer pump, high delivery up 30m (98.4ft) (prearranged for DTWRX board) |
| DTWRX | Optional board for remote control of wiper and water pump of the UPTWAS series |

ENVIRONMENT

Indoor / Outdoor
 Operating temperature with heater: -20°C / +50°C (-4°F / +122°F)
 Resistant to the salt-air fog until 1000 hours (according to ISO9227)

COMPLIANCE TO

CE according to EN61000-6-3, EN 60065, EN50130-4
 IP66/IP67 according to EN 60529 with cable glands
 IP66/IP67 according to EN 60529 with special gaskets and bracket with internal cable channel
 IP54 according to EN 60529 with bracket with internal cable channel
 IP44 according to EN 60529 with double filter housing

SPARE PARTS LIST

| | |
|-----------|---|
| OH0V32SUP | Complete upper body |
| OBKFI | Replacement filter kit for double filter housings |



Unit Weight:
 HOV32K1 3kg / 6.6lb
 HOV32K1A085B 4.3kg / 9.5lb

Package Weight:
 HOV32K1 3.4kg / 7.5lb
 HOV32K1A085B 4.8kg / 9.9lb

Package Dimension (BxHxL):
 HOV32K1 19.5x14.5x 52.8cm / 7.7x5.7x20.8in
 HOV32K1A085B 19.5x27x52cm / 7.7x5.7x20.8in

Master Carton:
 HOV32K1 4 units
 HOV32K1A085B 6 units